

POLK COUNTY DEVELOPMENT REVIEW COMMITTEE
CASE OVERVIEW
LDCPAS 2018-8 (Evans CPA)

DRC Date:	August 9, 2018	Level of Review:	4
PC Date:	February 6, 2019	Type:	Small Scale Comprehensive Plan Map Amendment (CPA)
BoCC:	April 2, 2019	Case Number:	LDCPAS 2018-8
Applicant:	Elizabeth Evans	Case Planner:	Harry Fix, Senior Planner

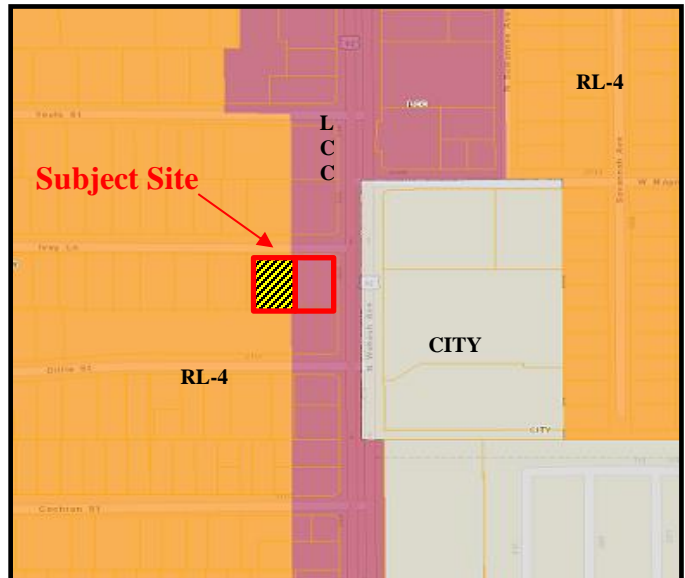
Request:	Change the Future Land Use designation on 0.317 +/- acres from Residential Low-4 (RL-4) to Linear Commercial Corridor (LCC) on a 0.634 acre parcel
Location:	The subject property is located approximately 0.5 mile south of W. Memorial Highway and 0.5 mile north of New Tampa Highway, Section 15, Township 28, Range 23
Property Owner:	Elizabeth Evans
Parcel Size (Number):	0.634 +/- acres (232815-086000-002010)
Development Area/Overlays:	Transit Supportive Development Area (TSDA)
Nearest Municipality:	Lakeland
DRC Recommendation:	Pending
Planning Commission Vote:	Pending Hearing
Public Comment:	Pending Hearing
Department of Economic Opportunity Objections:	N/A

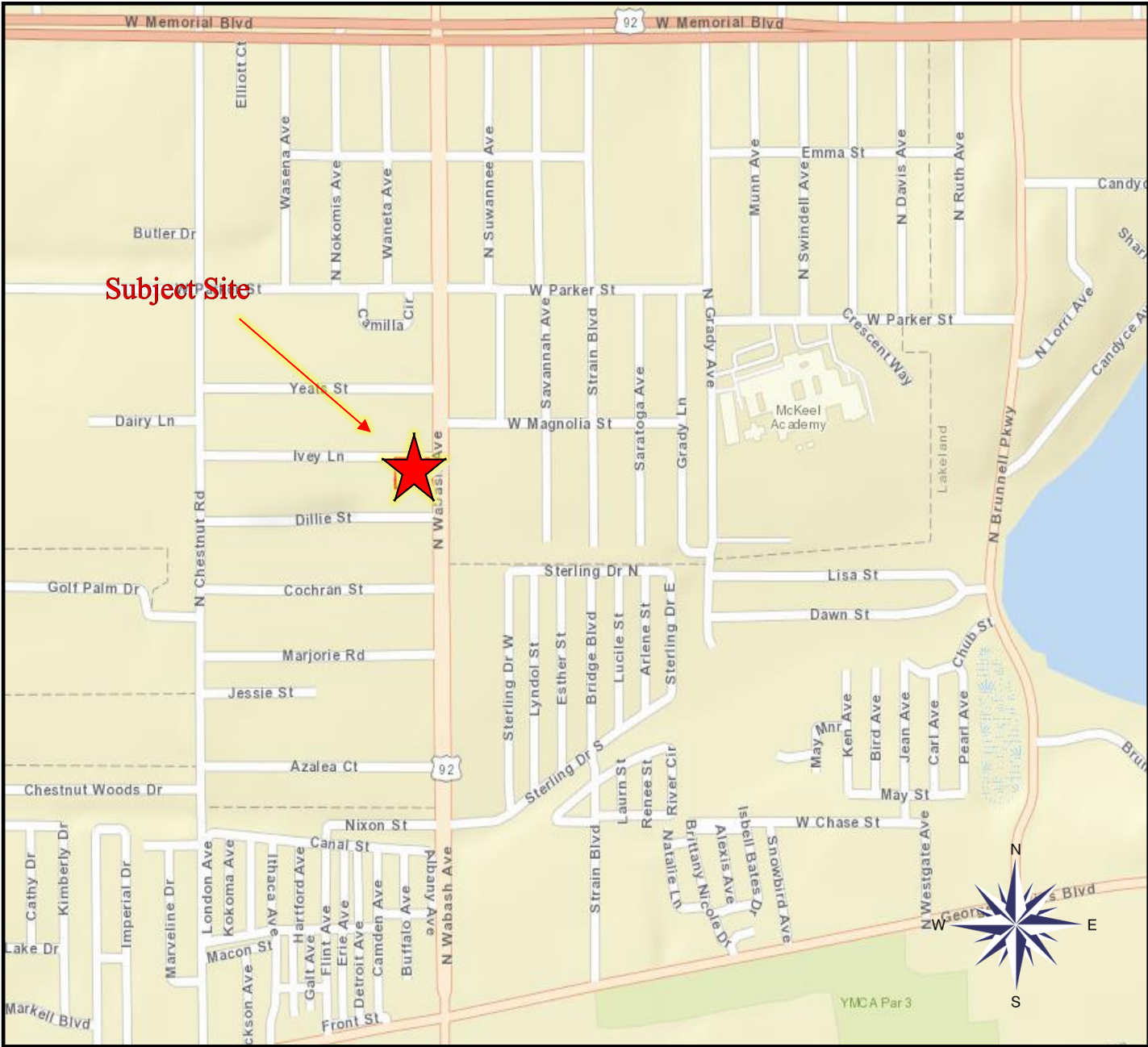
- Attachments: Exhibit 1: Vicinity Map
 Exhibit 2: Location Map
 Exhibit 3: Aerial Map
 Exhibit 4: Current Future Land Use/Proposed Future Land use

Location

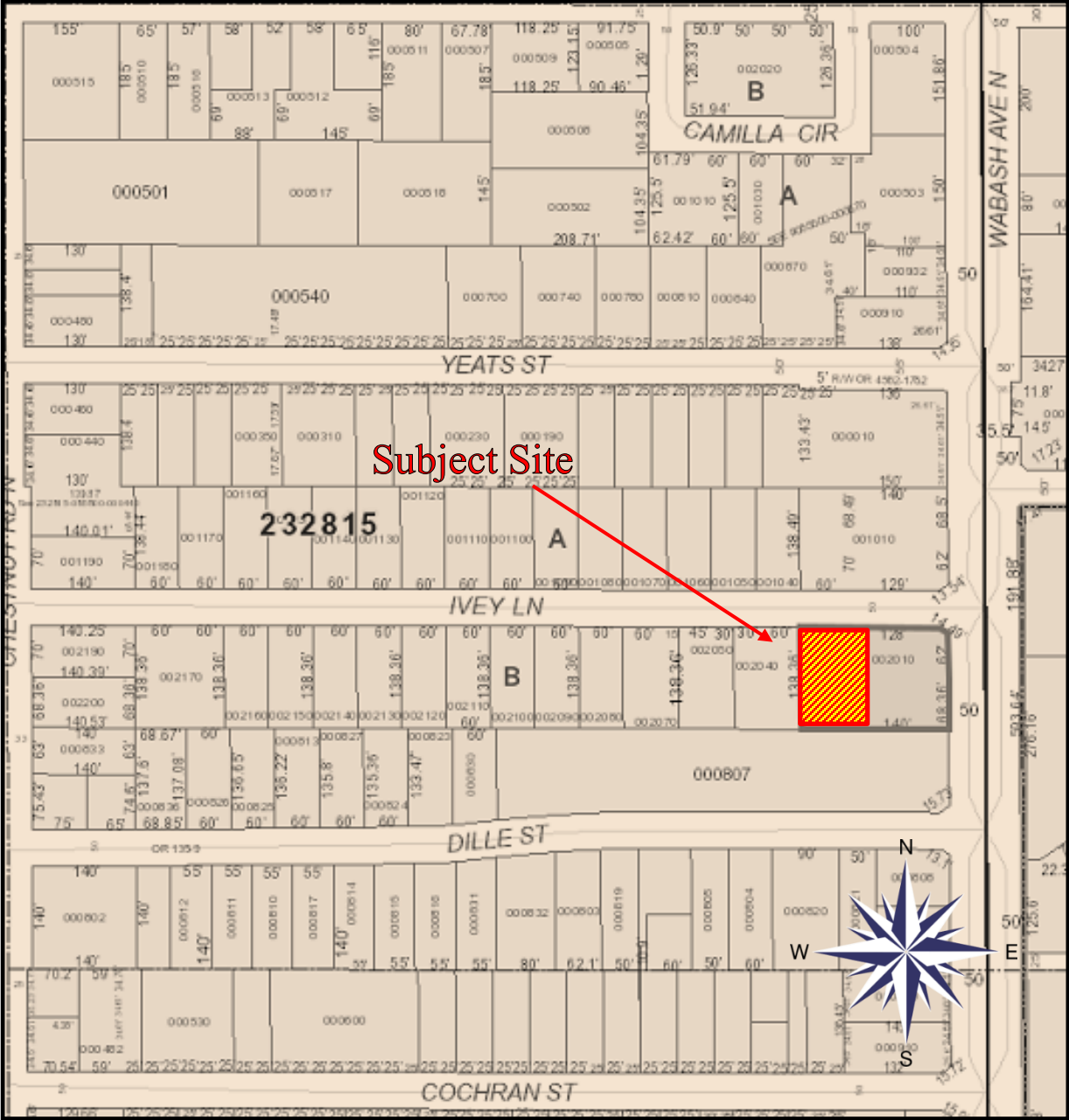


Current Future Land Use

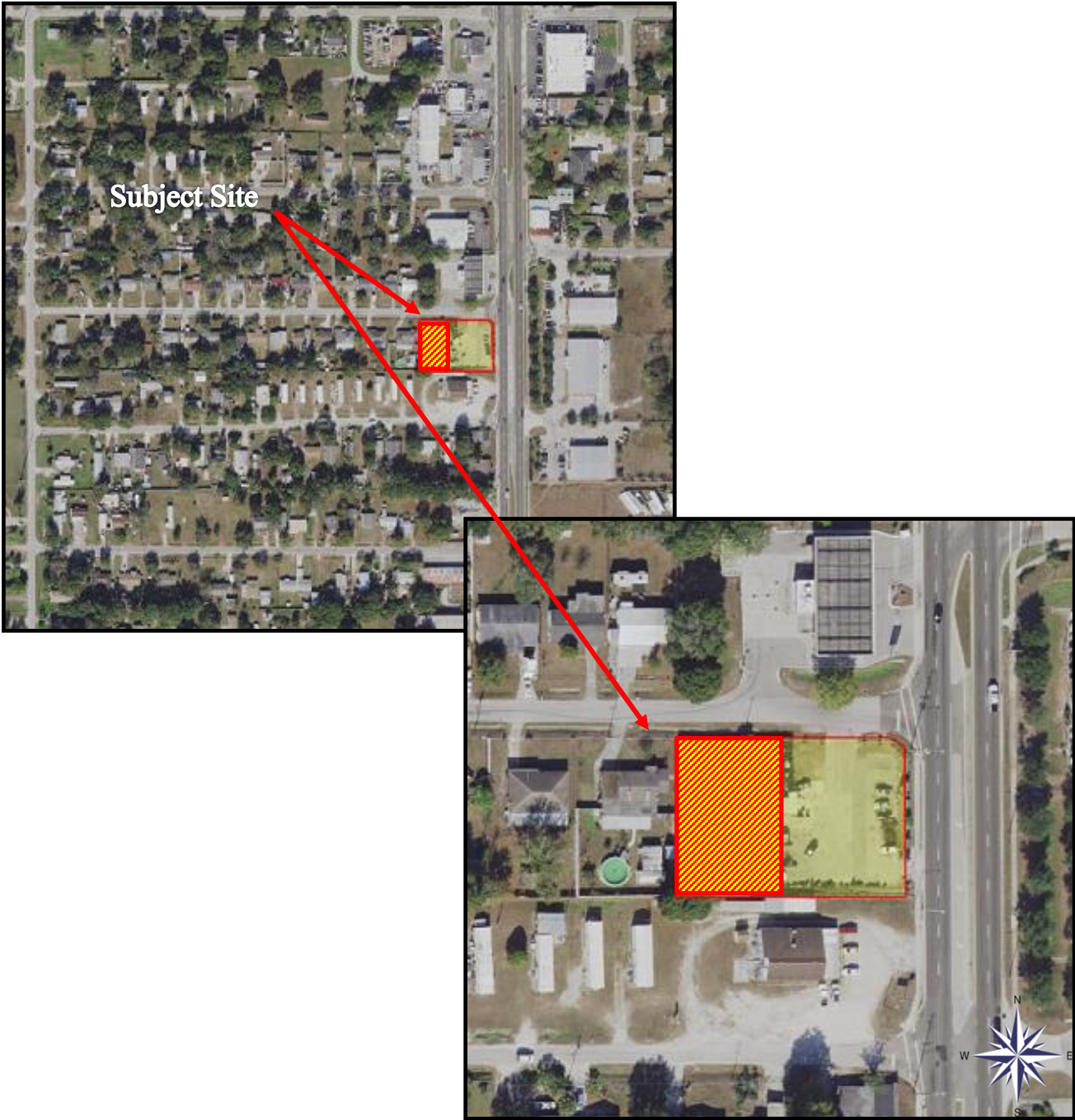




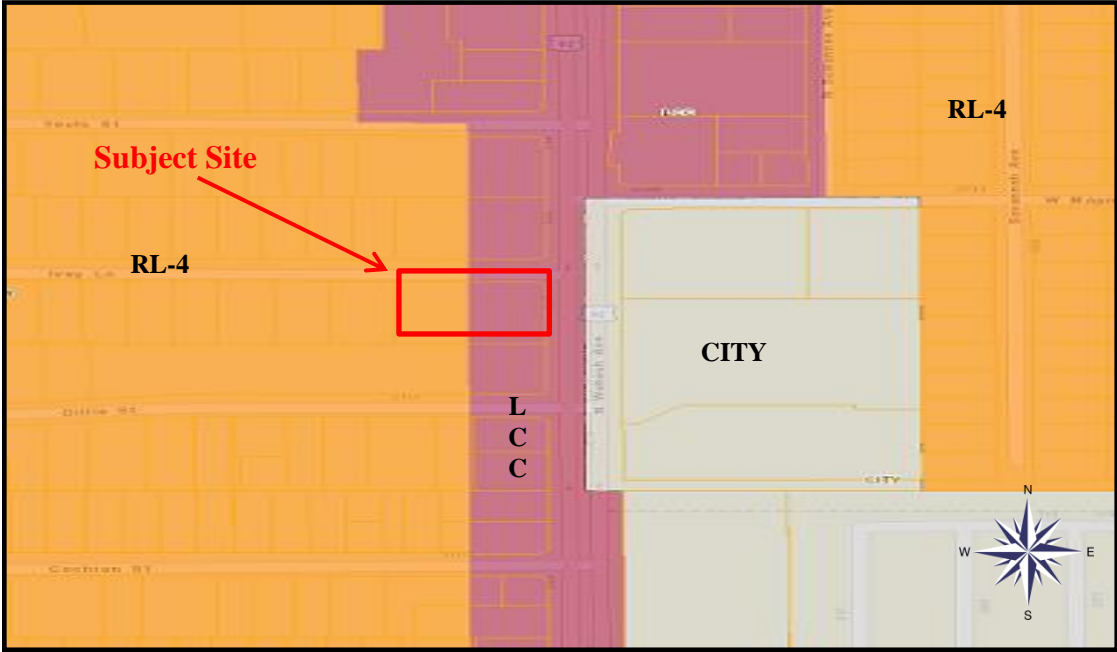
VICINITY MAP



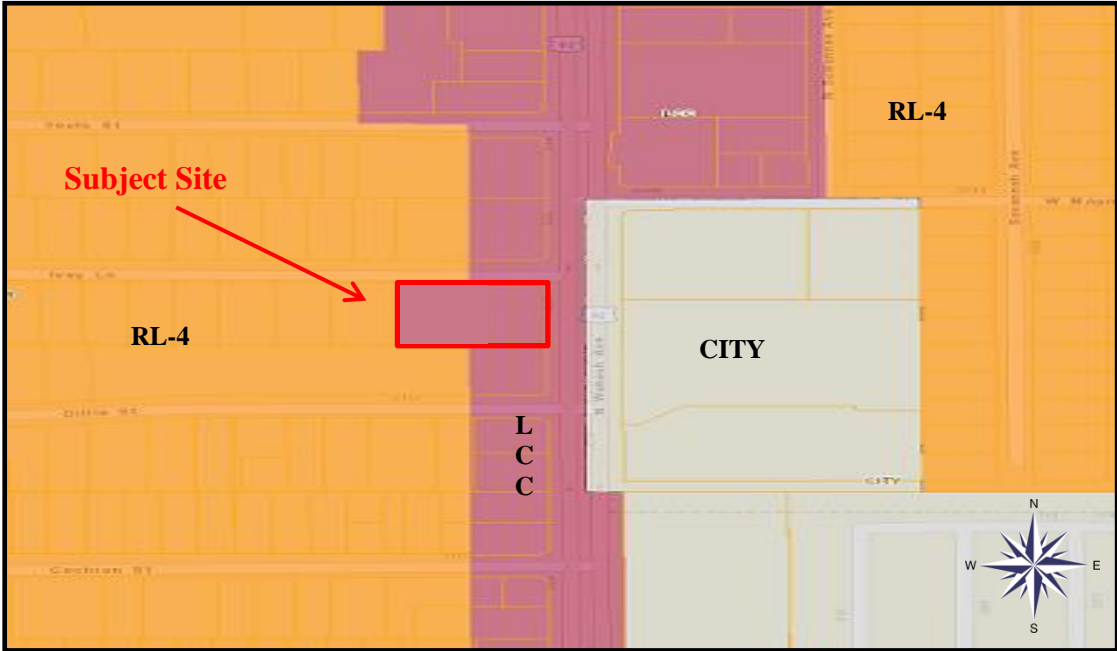
LOCATION MAP



AERIAL MAP



CURRENT FUTURE LAND USE



PROPOSED FUTURE LAND USE