



# CURBSIDE COLLECTION PLACEMENT

Curbside collection services include household waste or garbage, recyclable material collection, yard waste and bulk waste.

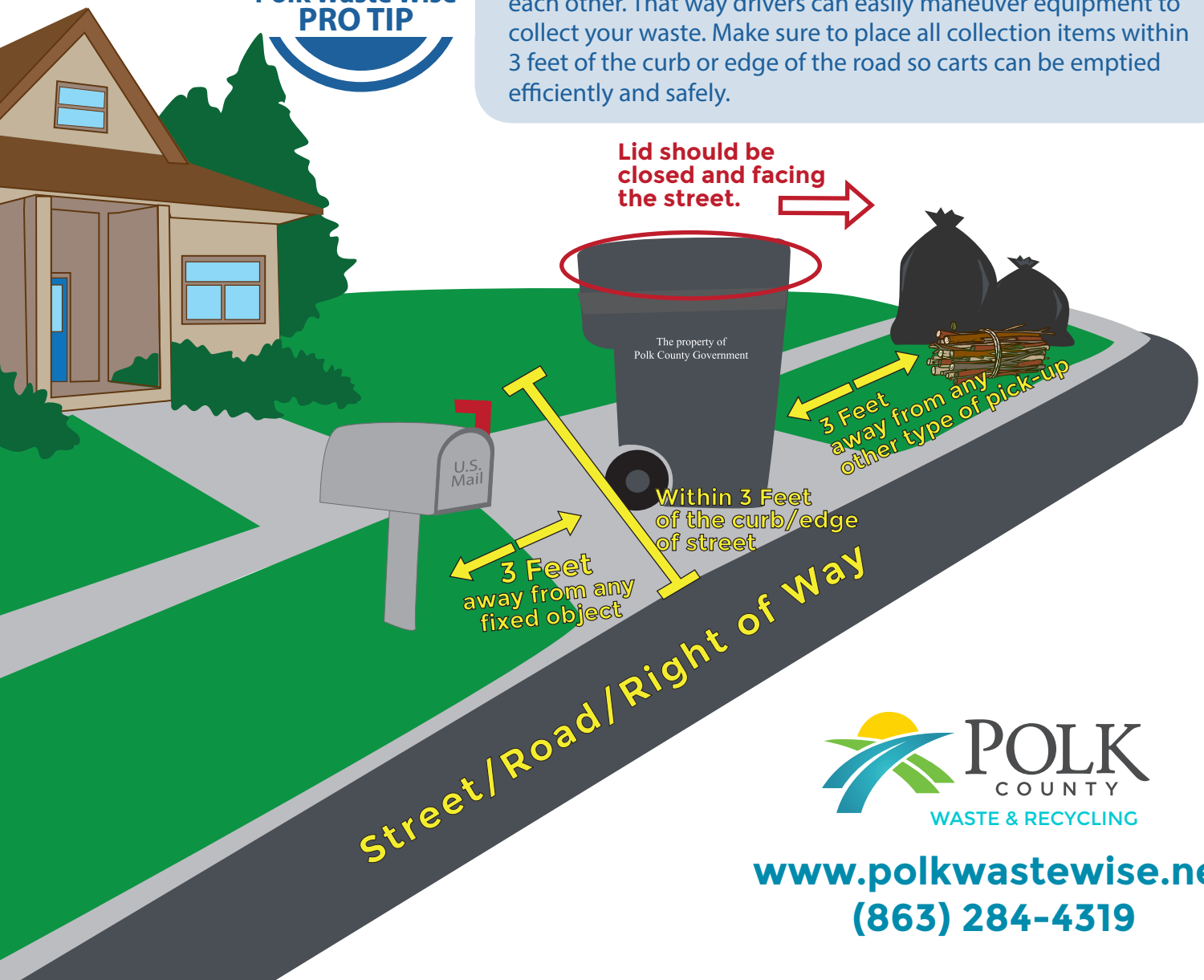
**For successful pick-up in all service areas, roll carts, bundles, yard and bulk waste MUST be:**

- curbside from 6 a.m. to 6 p.m.
- within 3 feet of the curb or edge of the street
- at least 3 feet from fixed objects and vehicles
- at least 3 feet from any other set out intended for pick-up, e.g. yard waste must be 3 feet from roll carts and bulk items



## 3 Feet is Sweet!

For optimal curbside collection, all waste & recycling materials must be placed curbside 3 feet away from everything else and each other. That way drivers can easily maneuver equipment to collect your waste. Make sure to place all collection items within 3 feet of the curb or edge of the road so carts can be emptied efficiently and safely.



[www.polkwastewise.net](http://www.polkwastewise.net)  
(863) 284-4319